

# Locking cylinders

hydraulic, without spring reset, single-acting, pmax. 500 bar

230-2

Issue: 10/2022

## Description:

The single-acting locking cylinder is suitable for locking of movable machine tables. It is equipped with either one or two pistons.

The loading of the piston is done hydraulically via a centralized pressure system connected to a G1/4 threaded port. Each piston has its separate port.

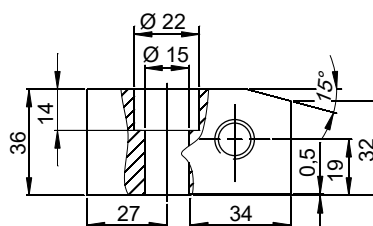
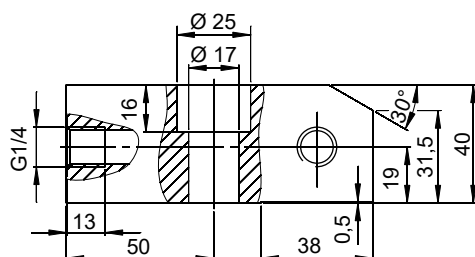
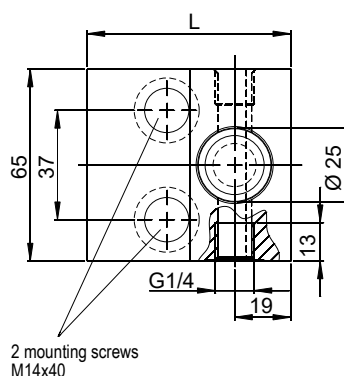
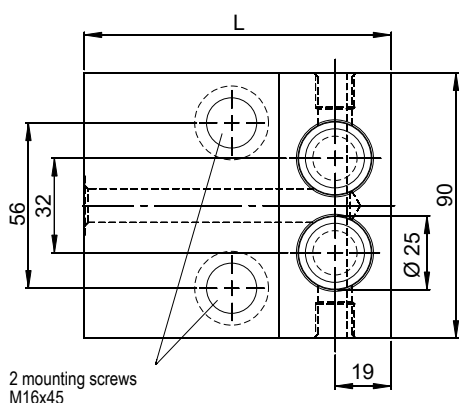
Various locking cylinders can be integrated into the machine control system. The relief of the piston is effected by the pressure reduction in the pressure system.

## Important notice:

The locking cylinder does not have any safety device to prevent the piston from falling out of the housing. It is not allowed to pressurise the locking cylinder if there is no counter surface for the piston.



Webcode: 023002



## Technical data:

### with 2 pistons

Max. piston stroke	[mm]	2
Locking force 100 bar	[kN]	9.8
Locking force 500 bar	[kN]	49.0

### Order numbers:

Lock. cylinder L= 104	[mm]	KZYL-5-02-001
Lock. cylinder L= 119	[mm]	KZYL-5-02-002
Piston seal (spare part)		6025-010
Locking screw G1/4 (spare part)		7900-001
Mounting screw M16x45, 10.9 <sup>(1)</sup>		7016-025

### with 1 piston

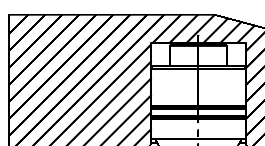
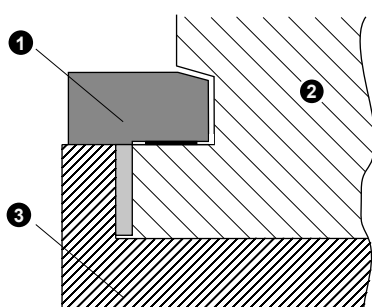
Max. piston stroke	[mm]	5
Locking force 100 bar	[kN]	4.9
Locking force 500 bar	[kN]	24.5

### Order numbers:

Lock. cylinder L= 69	[mm]	KZYL-5-01-001
Lock. cylinder L= 83	[mm]	KZYL-5-01-002
Piston seal (spare part)		6025-010
Locking screw G1/4 (spare part)		7900-001
Mounting screw M14x40, 8.8 <sup>(1)</sup>		7014-011

<sup>(1)</sup>Available as accessories.

## Application example:



- ❶ Locking cylinder
- ❷ Machine table
- ❸ Machine base

## Materials:

- ✘ Housing: free-cutting steel, burnished
- ✘ Piston: red brass
- ✘ Piston seal: NBR

## Advantages:

- ✘ Compact design
- ✘ High locking forces
- ✘ Locking pressure can be monitored
- ✘ Full use of pressure

## Safety instructions:

To increase the operational safety during the application of locking cylinders, we recommend the installation of pressure monitoring elements in each hydraulic circuit. If possible, the locking cylinder should be connected via two separate hydraulic circuits. Each should be secured by a check valve (e.g. see data sheet 700-10).

We also design and manufacture customized variants!



**HYDROKOMP®**

Hydraulische Komponenten GmbH

+49 6401 225999-0

sales@hydrokomp.de

Siemenstr. 16  
35325 Mücke (Germany)

www.hydrokomp.de

Technology that connects