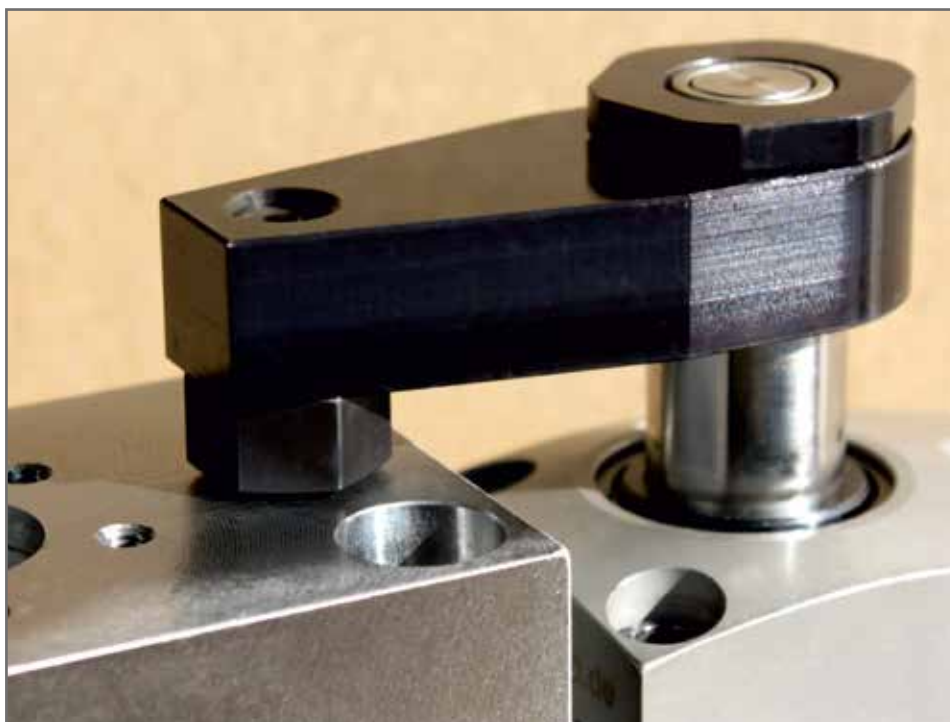


Contact bolts

for clamping elements

1000-1

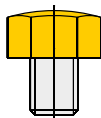
Issue: 10/2022



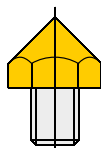
Application example:

Contact bolt **design 1**, dome head, in a clamp arm of a swing clamp cylinder

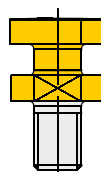
Contact bolts, designs:



Design 1:
contact bolt,
dome head

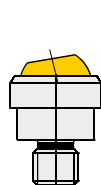


Design 2:
contact bolt,
cone head

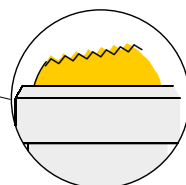


Design 3:
contact bolt,
with coupling pin

for piston Ø	Order no.	Order no.	Order no.
10 mm	7004-036	–	–
16 mm	7006-049	7006-050	–
20 mm	7008-071	7008-072	–
25 mm	7010-012	7010-013	7010-014
32 mm	7012-041	7012-042	7012-043
40 mm	7016-003	7016-004	7016-005
50 mm	7020-002	7020-003	7020-004
63 mm	7027-001	7027-002	7027-003
80 mm	7030-006	7030-007	7030-008
100 mm	7042-002	7042-003	–



Design 4:
swivel contact bolt,
plan contact face

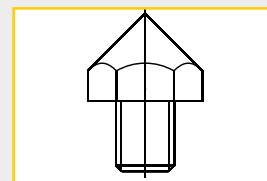


Design 5:
swivel contact bolt,
serrated contact face

for piston Ø	Order no.	Order no.
16 mm	7006-051	7006-052
20 mm	7008-073	7008-074
25 mm	7010-015	7010-016
32 mm	7012-044	7012-045
40 mm	7016-006	7016-007



Webcode: 100001



Description:

Contact bolts can be screwed directly into the inner thread of the piston rod of a clamping element or into separately available clamp arms.

Hydrokomp offers the contact bolts in various designs as accessories for the following clamping elements:

- ✘ Work supports
- ✘ Block cylinders
- ✘ Lever clamp cylinders
- ✘ Swing clamp cylinders
- ✘ Universal cylinders

Material:

- Steel, burnished
- Thread, soft
- Contact face, hardened

We also design and manufacture customized variants!



HYDROKOMP®

Hydraulische Komponenten GmbH



+49 6401 225999-0



sales@hydrokomp.de

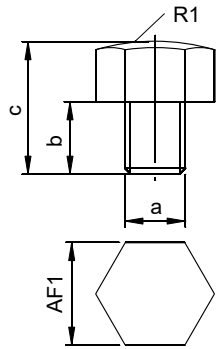


Siemenstr. 16
35325 Mücke (Germany)



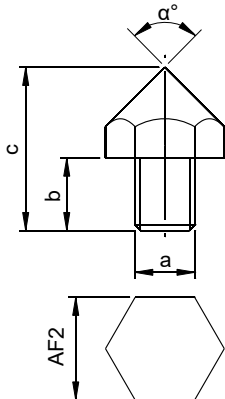
www.hydrokomp.de

Technology that connects



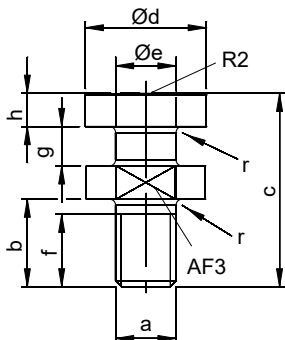
Design 1: contact bolt, dome head

Piston Ø	a	b	c	R1	AF1
10	M4	8,0	17	20	11
16	M6	10,0	20	20	10
20	M8	8,0	13	25	13
25	M10	12,0	22	35	17
32	M12	12,0	22	45	19
40	M16	20,0	30	60	24
50	M20	25,0	35	60	30
63	M27	30,0	47	100	41
80	M30	35,0	54	100	46
100	M42	45,0	71	140	65



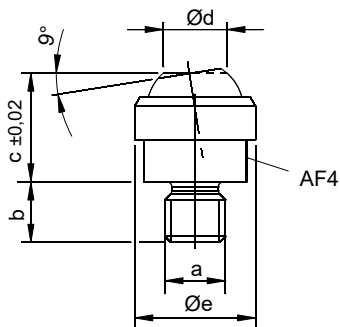
Design 2: contact bolt, cone head

Piston Ø	a	b	c	α°	AF2
16	M6	10,0	22	90	10
20	M8	8,0	22	90	13
25	M10	12,0	27	90	17
32	M12	12,0	25	120	19
40	M16	20,0	35	120	24
50	M20	25,0	40	120	30
63	M27	30,0	50	120	41
80	M30	35,0	60	120	46
100	M42	45,0	77	120	65



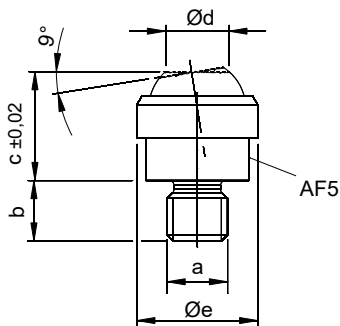
Design 3: contact bolt with coupling pin, pmax. tractive 350 bar

Piston Ø	a	b	c	Ød	Øe	f	g	h	r	r2	AF3
16	-	-	-	-	-	-	-	-	-	-	-
20	-	-	-	-	-	-	-	-	-	-	-
25	M10	14,5	32	20	10	12	6,5	5,5	1,0	320	17
32	M12	14,5	32	20	10	12	6,5	5,5	1,0	320	17
40	M16	20,0	40	25	14	14	7,0	6,0	1,5	400	22
50	M20	28,0	56	32	17	22	10,0	10,0	1,5	500	27
63	M27	39,0	75	40	23	32	12,0	12,0	2,0	630	36
80	M30	35,0	89	52	28	25	19,0	19,0	2,5	800	46
100	-	-	-	-	-	-	-	-	-	-	-



Design 4: swivel contact bolt, spherical, plan contact face

Piston Ø	a	b	c ±0,02	Ød	Øe	AF4
16	M6	8,0	13	7,2	13	11
20	M8	8,0	13	7,2	13	11
25	M10	10,0	18	10,5	20	17
32	M12	12,0	18	10,5	20	17
40	M16	16,0	27	20,0	30	27
50	-	-	-	-	-	-
63	-	-	-	-	-	-
80	-	-	-	-	-	-
100	-	-	-	-	-	-



Design 5: swivel contact bolt, spherical, serrated contact face

Piston Ø	a	b	c ±0,02	Ød	Øe	AF5
16	M6	8,0	13	7,2	13	11
20	M8	8,0	13	7,2	13	11
25	M10	10,0	18	10,5	20	17
32	M12	12,0	18	10,5	20	17
40	M16	16,0	27	20,0	30	27
50	-	-	-	-	-	-
63	-	-	-	-	-	-
80	-	-	-	-	-	-
100	-	-	-	-	-	-

Maße in [mm], Bestellnummern siehe Seite 1.